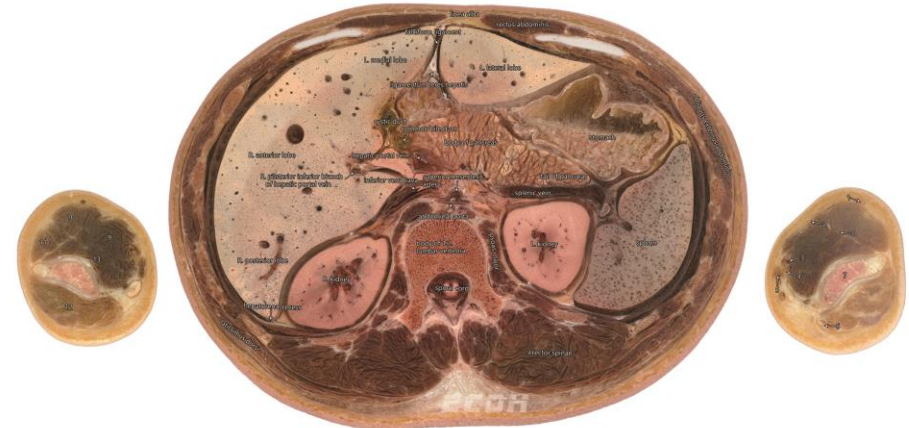


ECDH-ANA DP High-definition Tomographic 3D Printing Model



Human body tomography specimens are very important teaching tools in anatomy teaching. Traditional human body tomography specimens have some disadvantages, for example, "lack of high quality specimens, unclear structure, fading, expensive, rare in quantity, difficult to keep, and toxic and volatile".

The human tomographic image is the basis for the 3D reconstruction of the human body, and the magnitude of the information of the tomographic image directly affects the accuracy of the 3D reconstruction. Because of today's technology, we don't have many methods to get human tomographic, and this will have various deficiencies in traditional anatomical teaching tools.



1. cephalic vein
 2. lateral antebrachial cutaneous nerve
 3. brachial artery
 4. median nerve
 5. basilic vein
 6. ulnar nerve
 7. trochlea of left humerus
 8. radial nerve
 9. biceps brachii
 10. brachioradialis
 11. extensor carpi radialis longus
 12. triceps brachii
 13. brachialis
- Transverse section through celiac trunk

Product Introduction

High-precision continuous tomographic optical images of two complete specimens of men and women were collected by milling. The specimens were continuous human tomographic data with no organic lesions and no missing, digital human HD tomographic 3D printing model by 3D printing technology. The 3D printing model uses a combination of superior and inferior surfaces to print a continuous section with a standard section spacing of 10 mm, a section thickness of 3 mm, 175 sheets of women, 350 sections, and 180 sheets of male and 360 sections. The print ratio is 1.2:1 (Product customization at any pitch and magnification is acceptable, the sagittal plane and coronal plane will come out later). The digital human high-definition tomographic 3D printing model has higher definition than traditional tomographic specimens, and because of the freezing mill method, the structure is complete and easier to identify. Each tomographic print model is marked with Chinese and English.



Customer Service Hotline
0086-400-003-1077
Security abbreviation: Digital Human
Stock code : 835670



Product Advantages

1. Solve the problem of insufficient teaching resources.
2. Select high-quality human body tomography data.
3. High-definition scanning, high definition, realistic color.
4. Meet the use of multiple fields.
5. More continuous data, cost less.
6. No pollution, easy to save, easy to maintain.



ECDH-ANA DP

High-definition Tomographic
3D Printing Model